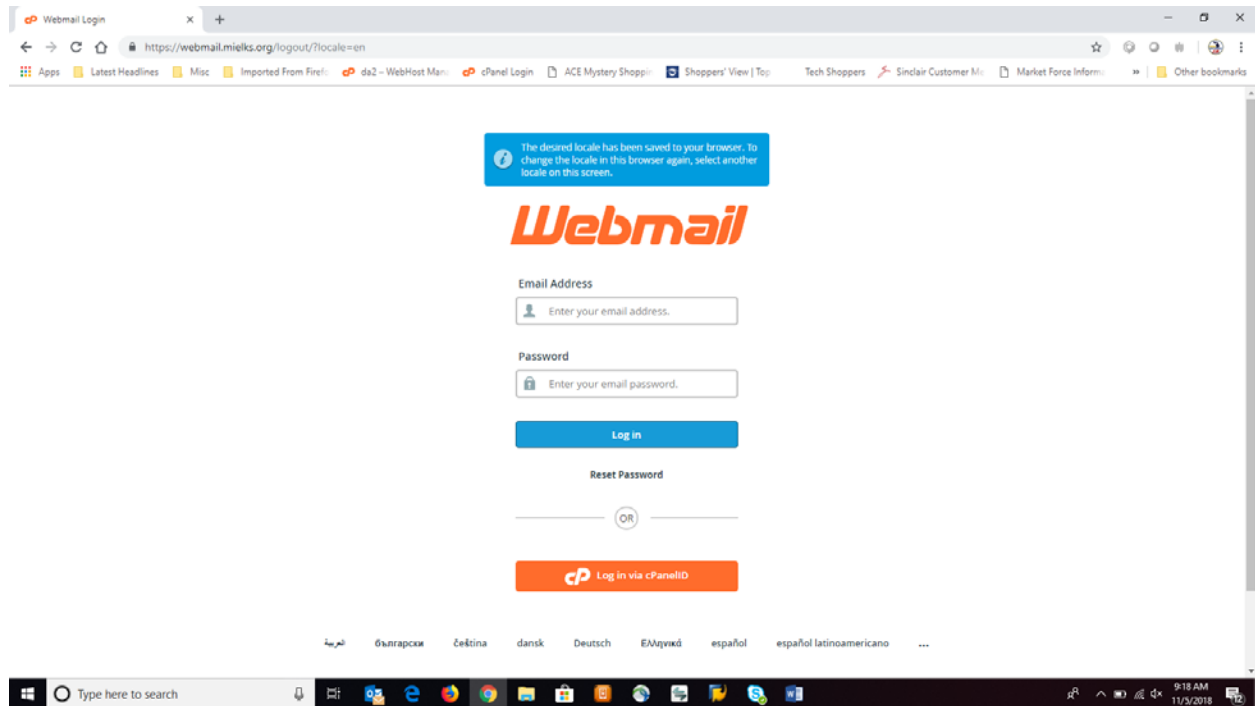


To access your mielks.org email from a Desktop, laptop or tablet computer go to <https://mielks.org:2096/>.

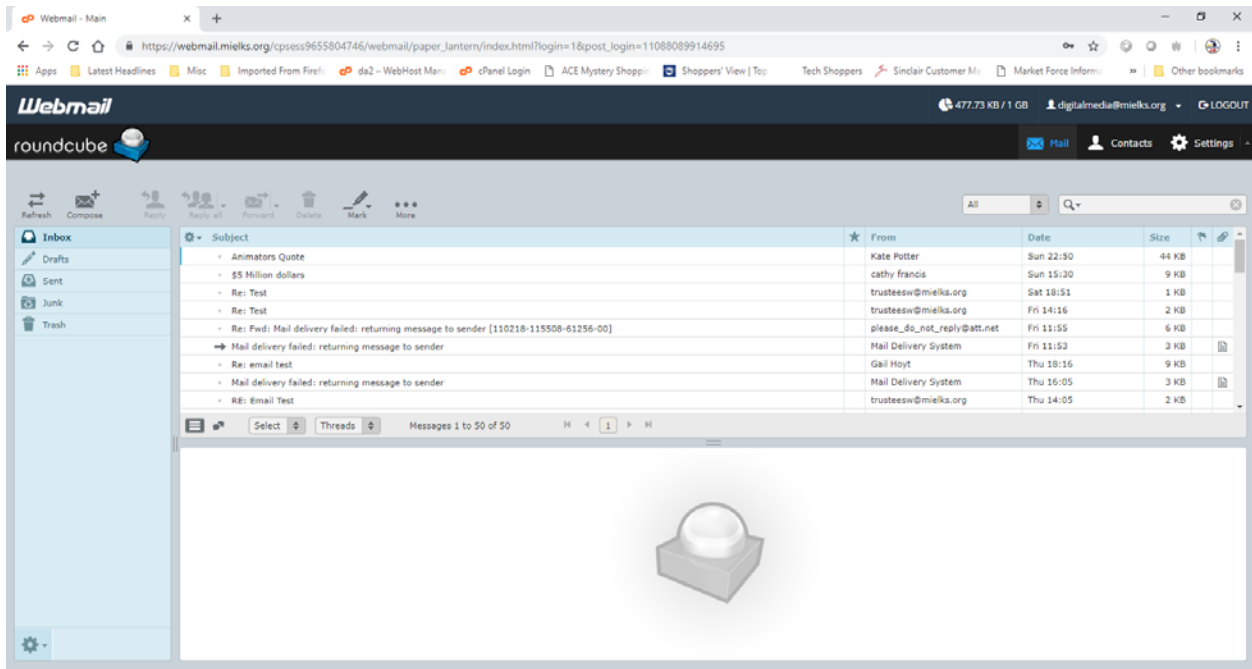


Enter your mielks.org email address

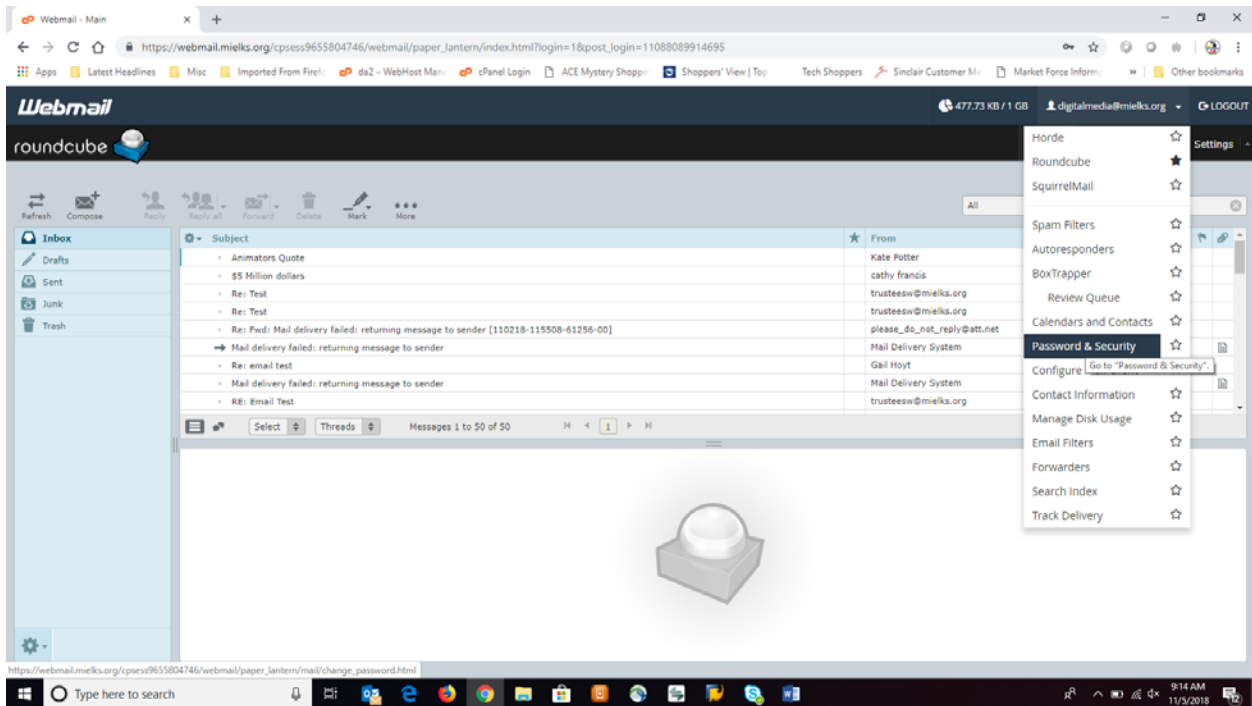
Enter your temporary password: michiganrocks2

Click login

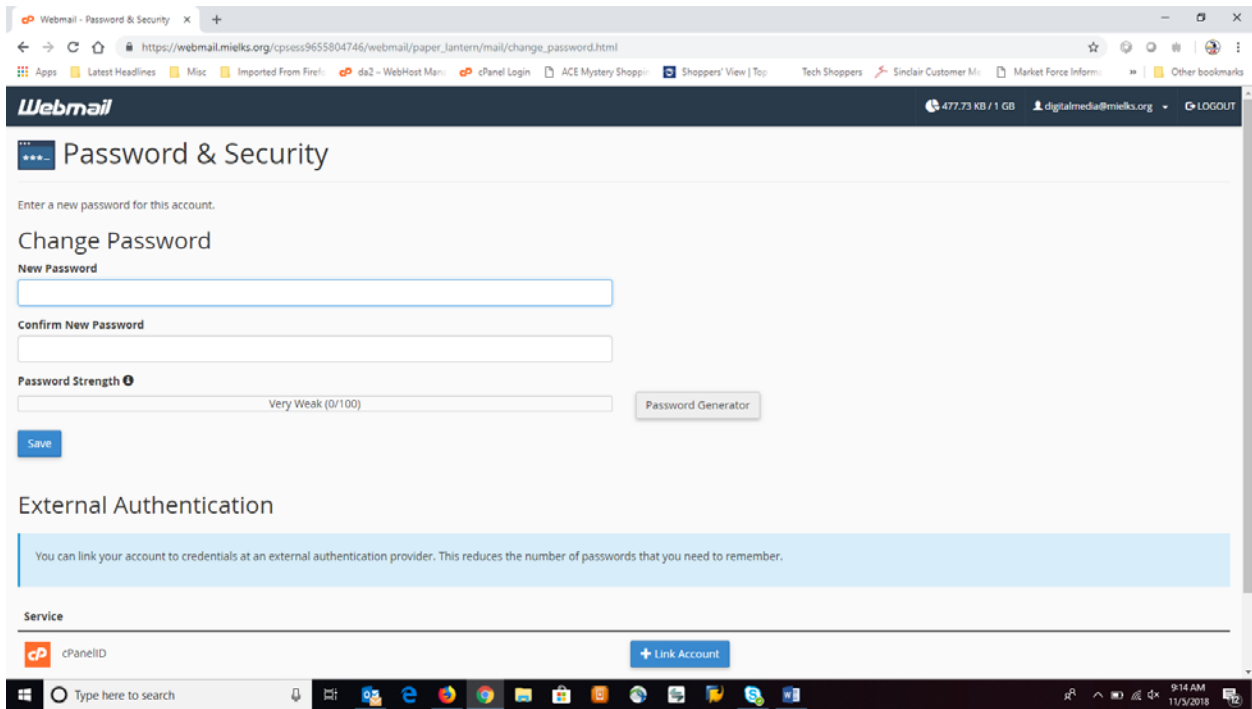
Once in your email box, to change your password select your email address in the upper right corner



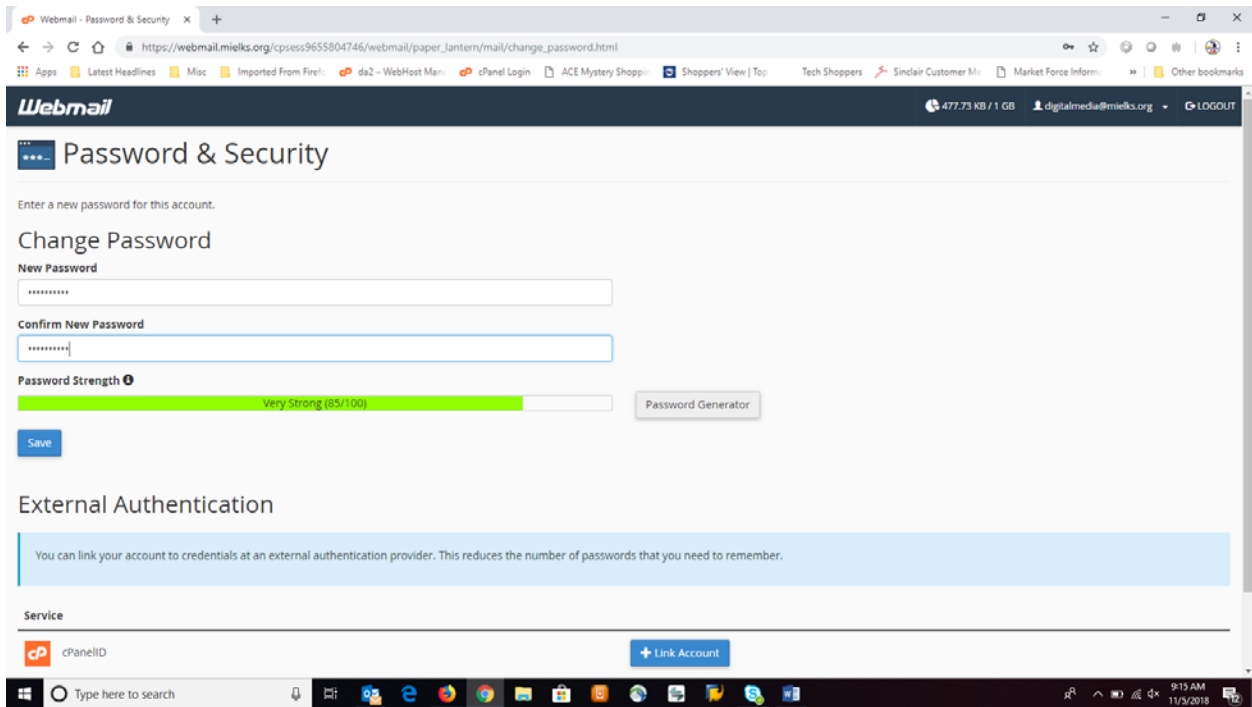
You will see a drop-down menu. Choose passwords & Security



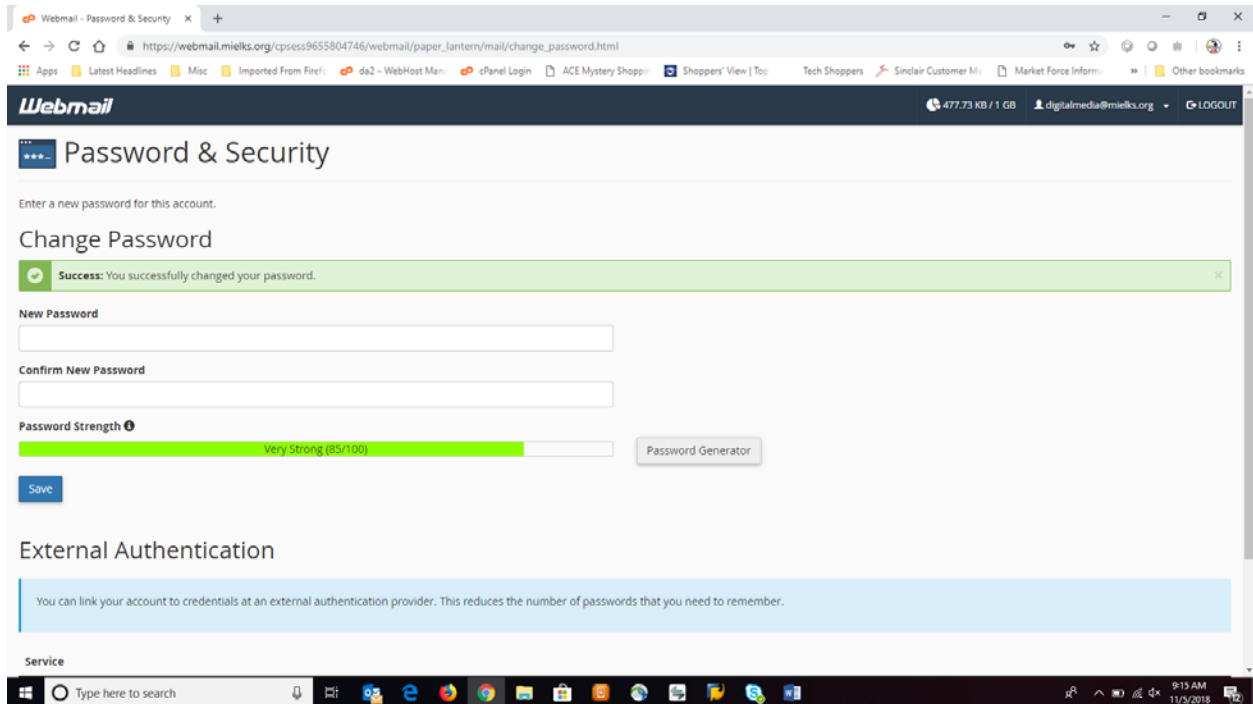
You will see the password change menu



Enter your new password and select save



You will see a message that your password change was successful. If you don't see this message a step was missed, and you must start over.



Click logout and the re-log into your mailbox using your new password.

Webmail - Password & Security x +

https://webmail.mielks.org/cpsess9655804746/webmail/paper_lantern/mail/change_password.html

Apps Latest Headlines Mac Imported From Fire! da2 - WebHost Man: cPanel Login ACE Mystery Shopp: Shoppers' View | To: Tech Shoppers Sinclair Customer M: Market Force Inform: Other bookmarks

Webmail 477.73 KB / 1 GB digitalmedia@mielks.org LOGOUT

Password & Security

Enter a new password for this account.

Change Password

Success: You successfully changed your password.

New Password

Confirm New Password

Password Strength Very Strong (85/100)

External Authentication

You can link your account to credentials at an external authentication provider. This reduces the number of passwords that you need to remember.

Service

Type here to search

9:15 AM 11/5/2018